

champions  implants

MIMI[®] Flapless

The Gentle & Safe
Method of Implantation

For implantology starters & advanced implantologists

Benefit from 25 years of experience

Efficient, gentle & successful

Champions Q & A
www.champions-implants.com.hk

champions  implants

www.champions-implants.com.hk

MIMI®-Flapless 10 Frequently Questions & Answers

1	What is the difference between MIMI® and the conventional implantation method?	Page 3
2	Does flapless surgery require a DVT, planning software and a 3D-drilling template?	Page 4
3	Can you often avoid augmentations if you perform implantation using MIMI®-Flapless?	Page 4
4	How long should you wait after a dental extraction until the bone is regenerated and you can place an implant?	Page 5
5	I have never placed an implant before, but I would really like to start with MIMI®-Flapless implantation. What can I do?	Page 5
6	I am afraid to perforate the bone because I don't see it directly! Is MIMI® - Flapless a "blind" procedure?	Page 6
7	Performing a late implantation, isn't there a danger of epithelial cells being transported into the bone cavity, because of the transgingival drilling and transgingival implantation, causing only a connective tissue healing around the implant?	Page 6
8	Which equipment is necessary, in the dental office, to start with MIMI®-Flapless implantation and Champions® Implants?	Page 7
9	How long and by how many dentist colleagues has MIMI®-Flapless been used?	Page 7
10	What are the materials and surface for Champions® dental implants? Will cause the body's rejection?	Page 8



Dr. med. Dent. Armin Nedjat
Champions Implants Founder
CEO Champions-Implants GmbH
Dentist, Implantology specialist DGZI
"Diplomate" ICOI

vor 20 Jahren entwickelte ich auf Basis der orthopädischen Chirurgie das MIMI®-Flapless-Verfahren. Viele Dogmen und Lehrmeinungen in der Implantologie sind seither aufgrund dessen revidiert oder gänzlich verworfen worden. Ich versuche Ihnen in dieser Broschüre die 10 wichtigsten Fragen zum MIMI®-Flapless-Verfahren zu beantworten – natürlich ohne den Anspruch auf Vollständigkeit. Doch vielleicht beginnt anhand dessen auch bei Ihnen ein ähnlicher Funke Faszination wie damals bei mir zu berzuspringen?

Herzlichst,

Ihr Kollege Armin Nedjat

1

What is the difference between MIMI® and the conventional implantation method?

During the MIMI® surgery, patients experience little or no bleeding. MIMI® is comparable with keyhole and endoscopic-internal surgeries. Patients treated with MIMI® usually can resume their daily activities the next day. Without pain and swelling - because using MIMI®, the periosteum is protected to the maximum during surgical and as well during prosthetic procedures.

In 98% of the cases, surgery requires neither an exposure of the implant nor a reopening of the gingiva. Immediately after implantation, you perform a "closed impression", same as for a dental preparation. Beneath saving surgery sessions and time, do not forget the benefits for the patient: the patient practically does not feel any pain and in most cases, the final prosthodontic restoration is done only 8-10 weeks after implantation.

If the implant is immediately loaded, the final prosthodontic restoration is done on the same day or only few days after implantation.

Minimally Invasive Method of Implantation (MIMI®)

NO mucoperiosteal flap during surgery

NO implant exposure

NO subgingival impression for prosthodontic restorations



champions  implants

(R)Evolution® Implants



The Champions Implant (R)Evolution® is a two-piece premium implant. In 2010, it was especially designed to be used for MIMI®. Thanks to its Shuttle, this implant is unique in the dental implant market.

The (R)Evolution® are available in lengths of 6.5 – 8 – 10 – 12 – 14 – 16 mm diameters of 3.5 – 4.0 – 4.5 – 5.5 mm.

The Champions Implant (R)Evolution® is equipped with a sterile Shuttle. It will be removed with a special tool, only when the superstructure or the final prosthodontic work is fitted.

The Shuttle is All-in-One:

- Insertion aid
- Surgical screw
- Healing cap
- Impression tool

NO deformation of the implant during insertion
NO bacterial contamination of the internal part of the implant Crestal micro-thread (slightly conical)
Platform-Switching concept with internal cone of 9.5°
Unbeatable, even in the premium market

2

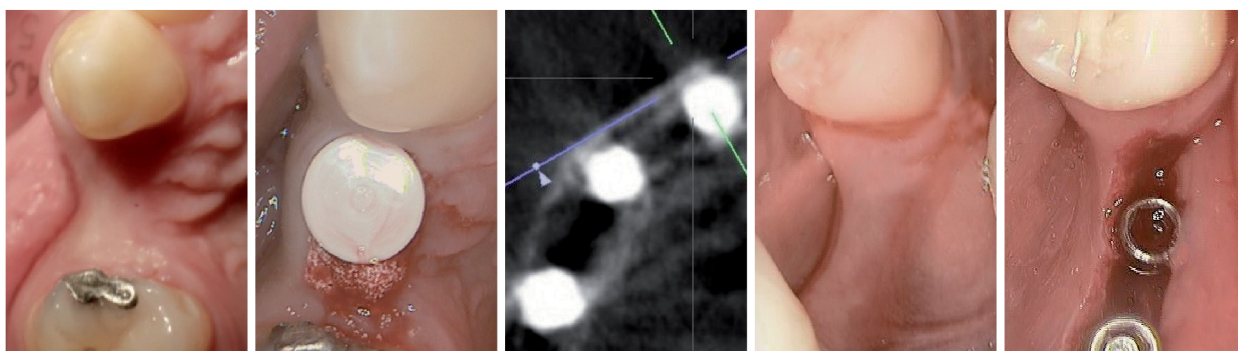
Does flapless surgery require a DVT, planning software and a 3D-drilling template?

No. From a medical point of view, a DVT for pre-operative planning is necessary in only 5% of our cases. First, it is not very cost-efficient. Second, the patients are exposed to massive radiation.

You only need drilling templates with other implant systems, drilling at 400 rpm or more in the spongybone. In addition, serious studies, non-sponsored by Industry, are talking clear: a drilling template does not ensure a reliable treatment. It is the opposite: you don't really see your surgical site, and you fully rely on the lab, which has manufactured this template.

For MIMI®-Flapless you do not need a planning software, because one thing is fact: "the diameter of the to be placed implant is not determined by the width of the alveolar ridge, than by the primary stability of the intra-operatively inserted condensers!"

For a long time, scientific studies have already confirmed this!



3

Can you often avoid augmentations if you perform implantation using MIMI®-Flapless?

Yes, since more and more short implants (from a length of 6 mm) can be placed in the horizontal dimension. With the MIMI®- Flapless II method (developed and performed by Dr. Ernst Fuchs-Schaller 1996)

you can treat narrow alveolar ridges in the vertical dimension. Statistical research has shown that the success rate is the same as for long implants. In addition, with less complications and resorptions, MIMI®- Flapless II does not require as many sessions and possible complications as non effective bone augmentations.



4

How long should you wait after a dental extraction until the bone is regenerated and you can place an implant?

To be honest – from a medical-physiological and a patient-psychological point of view: 2-5 minutes after dental extraction! The best moment for an implantation is right after the dental extraction! That is why the phrase "I don't have many potential patients for implants" is not up-to-date anymore! To us MIMI-users science has proofed, based on studies: "Immediate implantation is the method of choice to preserve the structure of hard and soft tissues!" Usually, patients are happy, if they can choose on the therapy themselves.

From a forensic point of view, patients should have enough time to take their decision, but you should at least offer them this solution. Immediate implantation (dental extraction and implantation in just one session) is not only a big chance for our clinics, it has proven to be beneficial for our patients too: just one local anesthesia and only one surgery session! From a psychological point of view, it seems to be important for the patient: Get rid of the "sick tooth" and immediately get a "healthy root"!

Immediate implantation is the future!

Individual supervision in your dental office - if you are a start-up with Implantology!



You can find more details on our site about courses.
www.champions-implants.com.hk

5

I have never placed an implant before, but I would really like to start with MIMI®-Flapless implantation. What can I do?

At present, the only certified MIMI®-Flapless I & II courses with practical exam, are offered in the Champions-Implants Education Center in Flonheim (near Mainz, Germany).

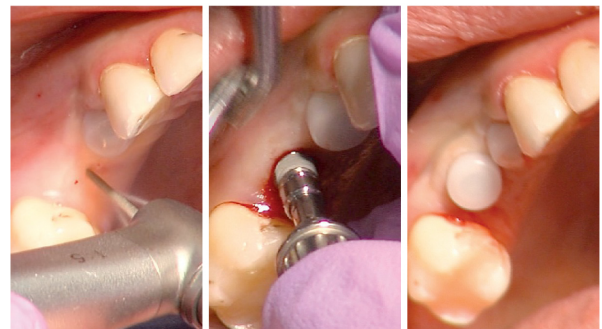
In addition, we offer individual surgery courses in your dental office. Under supervision, you will be able to learn and apply the technique when treating your own patients with implants. However, if you are experienced in Implantology, you do not need this support.

Also you do not need the MIMI®-Flapless I course. It is sufficient to sign the MIMI®-Flapless Basic Rules and to send them to us via Fax, Email or post office. Our goal is to demystify implantology, and to bring implantology into every standard dental office. Implantation is not supposed to be luxury property of elitist patients and surgeons.

Don't be afraid!

But respect the

technique!



6

I am afraid to perforate the bone because I don't see it directly! Is MIMI®- Flapless a "blind" procedure?

No, it is not a "blind" procedure because we palpate and check the bone cavity in all dimensions ("BCC": Bone Cavity Check) with a thin and flexible periodontal probe after each step – and like during an endodontic treatment you feel the bone "with your fingers": when you extract a tooth during an endodontic treatment, you don't really see the tooth roots too, but you feel them "digital" (with your fingers).

It is important to say, that you drill in spongy bone at a rotation speed of only about 70 rpm (instead of 400 to 1500 rpm with cylindrical drills, usually done with the conventional method)!

So again, like with an endodontic treatment, very slowly! The conical triangular drills, the condensers and the implant itself, we understand as "osteotomes" which allows the bone to be condensed gently and controlled.

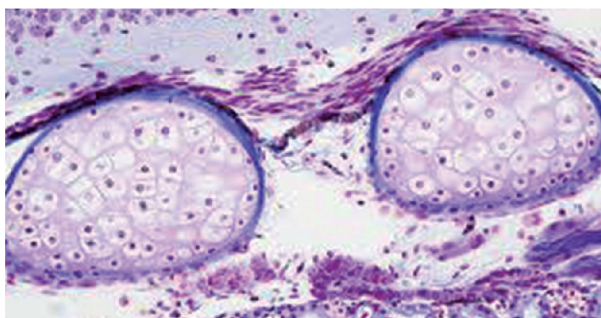
In addition the conical triangular drills are, used with low speed, always "navigated" within the spongy bone, with the help of the buccal and lingual corticalis.

7

Performing a late implantation, isn't there a danger of epithelial cells being transported into the bone cavity, because of the transgingival drilling and transgingival implantation, causing only a connective tissue healing around the implant?

Also this thesis, out of the "stone age" of implantology, has not proven to be true. If epithelial cells are not nourished, they will not live long. In fact, osteosynthesis and bone remodeling are not adversely affected. In addition, conical triangular drills have the positive feature to limit the penetration of elements into the bone cavity.

A connective tissue encapsulation around the implants is rather caused by lateral micro- and macro movements of the implants, during the weeks 2-8 after implantation, which can lead to an implant loss.



8

Which equipment is necessary, in the dental office, to start with MIMI®-Flapless implantation and Champions® Implants?

Actually you only need a green hand piece, controllable connected to your treatment unit, leaving enough "passage". An OPG might also be useful, but to help you out, a dentist colleague of yours or an orthodontist near to you might also be able to perform an OPG for your planning. In your dental

office you do not necessarily need a surgical device, no water cooling, no Piezo tool and no DVT.

Champions®
SURGERY KIT



9

How long and by how many dentist colleagues has MIMI®-Flapless been used?

MIMI®-Flapless has been used in Germany for about 25 years! Since 1994, I have been specialized in Implant Dentistry and prosthodontic work. Until now, I have inserted more than 22,000 implants using MIMI®-Flapless.

From 2001 to 2006, Dr. Armin Nedjat developed the Champions® Implant System, inspired by different dental implants systems. Meanwhile, Champions® Implants have been successfully placed in more than 4000 clinics/dental offices, in about 35 countries.

"Nothing is more constant than change": Where some people stop, others continue! We believe that the MIMI®-Flapless Procedure will become the "golden standard" in Implantology! For the well-being of our patients!

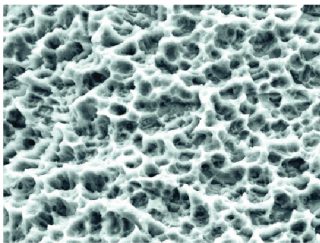


10

What are the materials and surface for Champions dental implants? Will cause the body's rejection?

The materials used in Champions dental implants were grade 4 titanium (99%).
Good biocompatibility, so far, the world has not yet found it will produce physical rejection.
Are you there to determine whether the case of titanium allergy,
doctors can send patients blood samples to the laboratory for testing.

A study, conducted by Dr. Dirk Duddeck at the University Clinic in Cologne, has shown that the Champions® implants have one of the best surfaces in comparison to the other analyzed implants, especially as far as surface roughness, uniformity, homogeneity and purity are concerned. ("Duddeck study").



"One of the best surfaces!"
Study of the University
Clinic in Cologne, 2012



Implant Study 2011/2012

Quantitative and qualitative element-analysis of implant-surfaces by Scanning electron microscopy (SEM)

SEM Images and EDX-Analysis
Champions Kugelkopf
LOT 602480

In cooperation with the European Association
of Dental Implantologists BDIZ-EDI
Quality & Research Committee



Project manager:
Dirk U. Duddeck, D.D.S.
Head of Surface Analyses

Interdisciplinary Outpatient Dep. for Oral Surgery and Implantology
Dep. for Craniomaxillofacial and Plastic Surgery
University Cologne
Krepler Str.62
D 50657 Köln

fon: +49 (0)221 478 5771
fax: +49 (0)221 478 5721
mobile: +49 (0) 171 5477991
mail: dirk.duddeck@uk-koeln.de

Priv.-Doz. Dr. med. dent. Armin Nedjat
Zahnarzt, Implantologe
Champions-Implants GmbH | CEO | Geschäftsführer

- > Spezialist Implantologie (Mehr als 22.000 erfolgreiche Implantationen und prothetische Versorgungen)
- > Entwickler des MIMI®-Flapless-Verfahrens I und Gründer der Champions-Implants GmbH, die seit der Gründung 2006 mit über 4.000 Kliniken und Zahnarztpraxen zusammenarbeitet.
Europaweit werden zurzeit jährlich mehr als 60.000 Implantate (einteilige sowie zweiteilige Champions® (R)Evolutions®) verkauft, Stand: 06/2015
- > ICOI Diplomate (Welt-Implantologie-Verband)
- > Gastprofessor Shanghai Jiao Tong University





Dr. Dr. Dr. Oliver Seitz, Hanau



ZÄ Ilka Partschefeld, Frankfurt



Dr. Thomas Löer, Kronach

More than 4000 hospitals and clinics of trust products

champions  implants



DIE Nr. 1 im MIMI®-Flapless-Verfahren
Unkomplizierte & bezahlbare Premium-Implantate für alle Indikationen
Sofortimplantation, -versorgung und -belastung
Qualität und einzigartige Innovationen
100 % Made in Germany

Mit MIMI®-Flapless und den Champions®-Implantaten
Halbieren Sie Ihre Behandlungszeit
Verdoppeln Sie Ihren Umsatz
Verdreifachen Sie Ihren Gewinn
Begeistern Sie Ihre Patienten

Priv.-Doz. Dr. med. dent. Armin Nedjat
Zahnarzt, Implantologe
Champions-Implants GmbH | CEO | Geschäftsführer Entwickler des MIMI®-Flapless-Verfahrens
ICOI Diplomate

